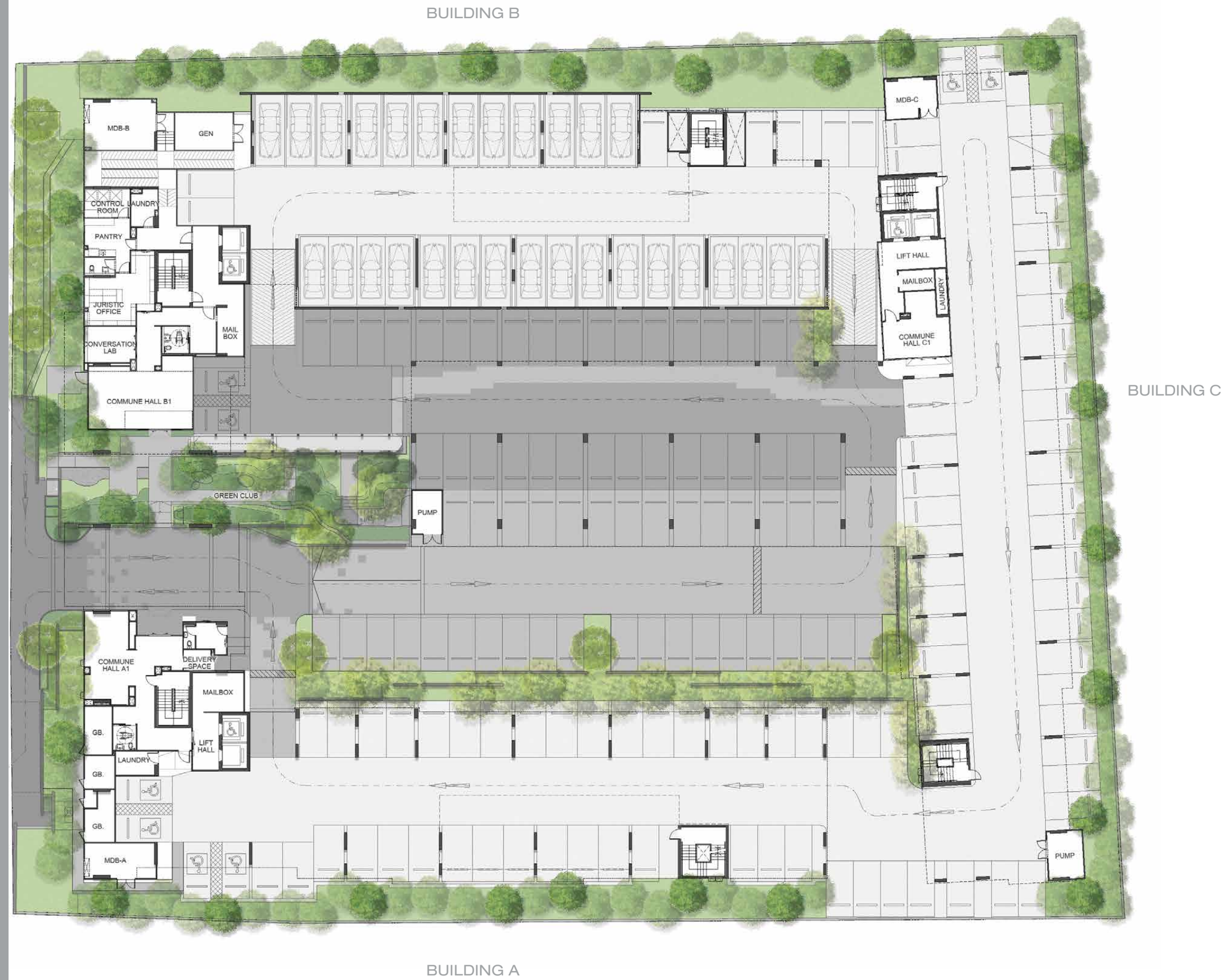


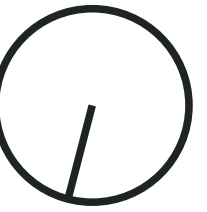
Phahon Yothin 40 Alley

Phahon Yothin 40 Alley, Lane 1



Phahon Yothin Road

Phahon Yothin 42 Alley



Phahon Yothin 40 Alley



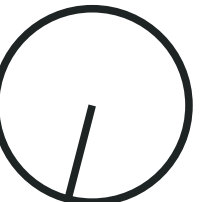
FLOOR PLAN

FL. 2<sup>nd</sup>

Phahon Yothin 40 Alley



FLOOR PLAN  
FL. 3<sup>rd</sup>

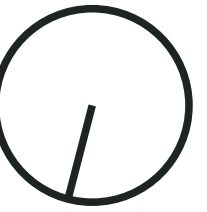


Phahon Yothin 40 Alley



FLOOR PLAN

FL. 4<sup>th</sup>

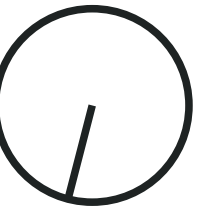


Phahon Yothin 40 Alley



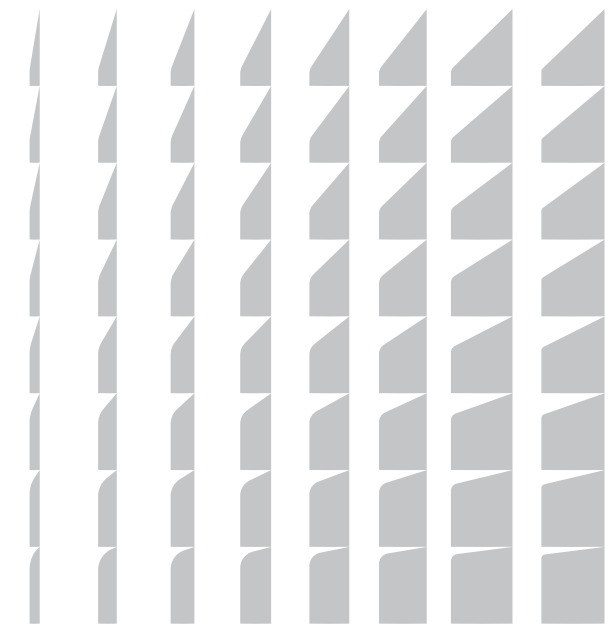
FLOOR PLAN

FL. 5<sup>th</sup> - 8<sup>th</sup>



# MORE DESIRABLE

เลือก และเก็บทุกความต้องการได้เยอะกว่า



ด้วยรูปแบบห้องให้เลือกมากถึง

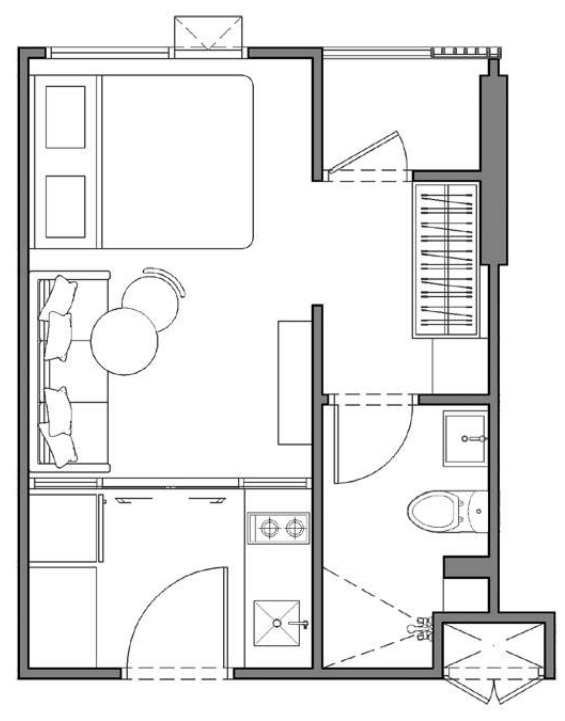
## 10 TYPES

กว่า 50% มี Walk-In Closet

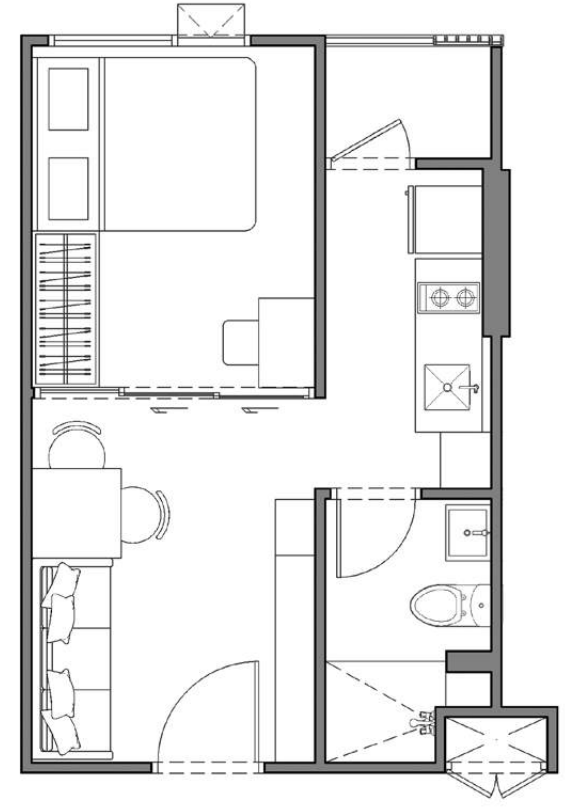


All illustration pictures are artist's impressions which serve only as a guide for the general conceptual idea of the project.

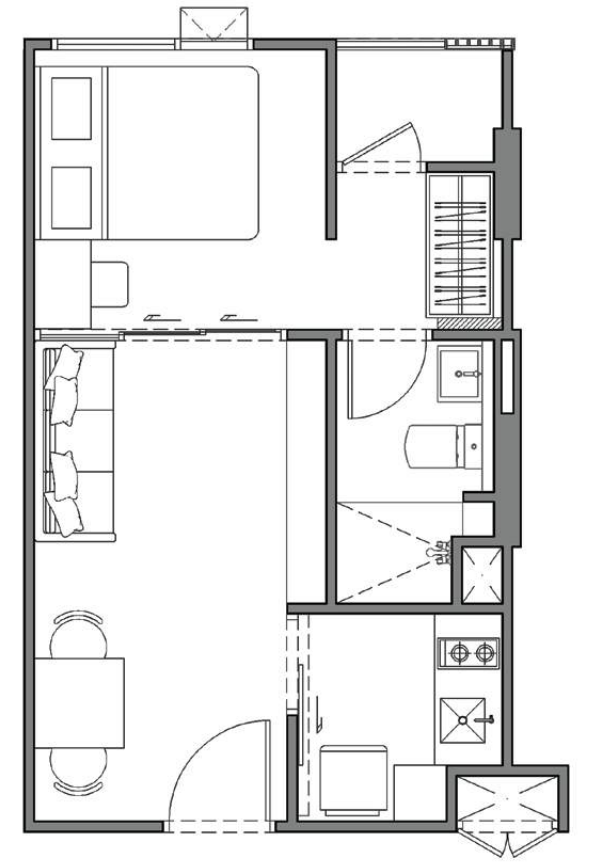
## UNIT TYPES - 1 BEDROOM



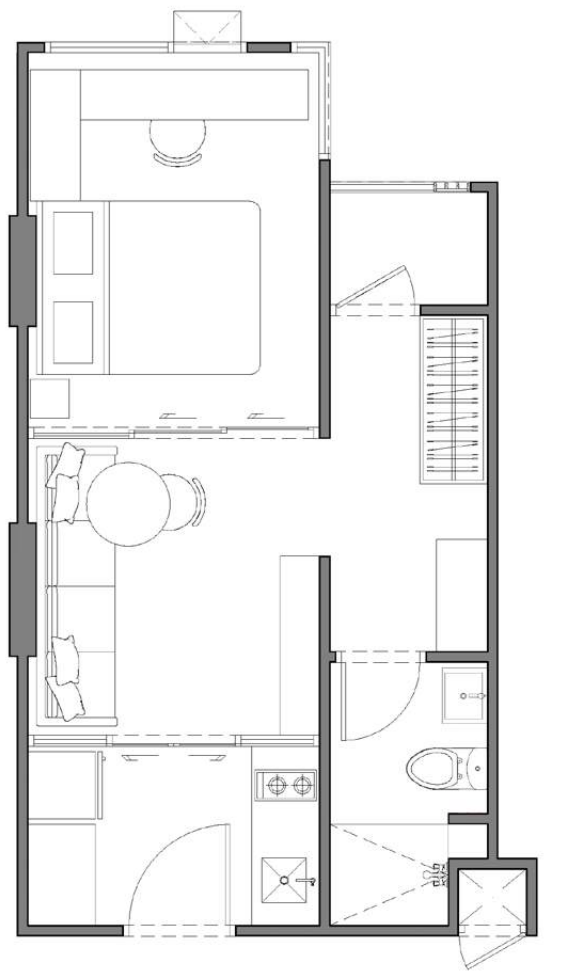
Type : A  
22.5 sq.m.



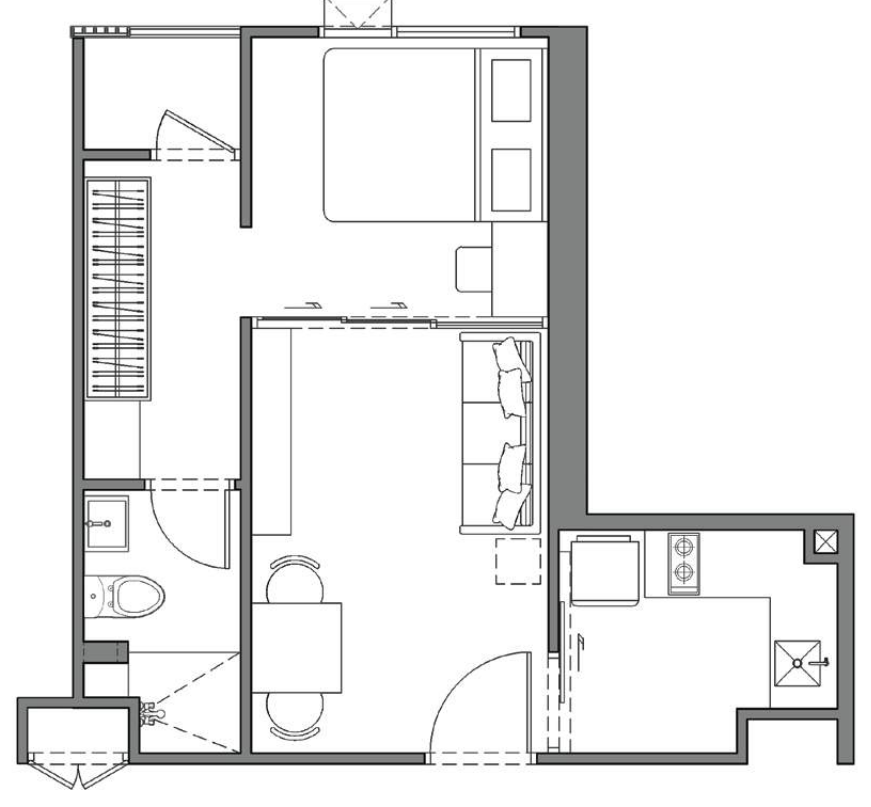
Type : B  
26.4 sq.m.



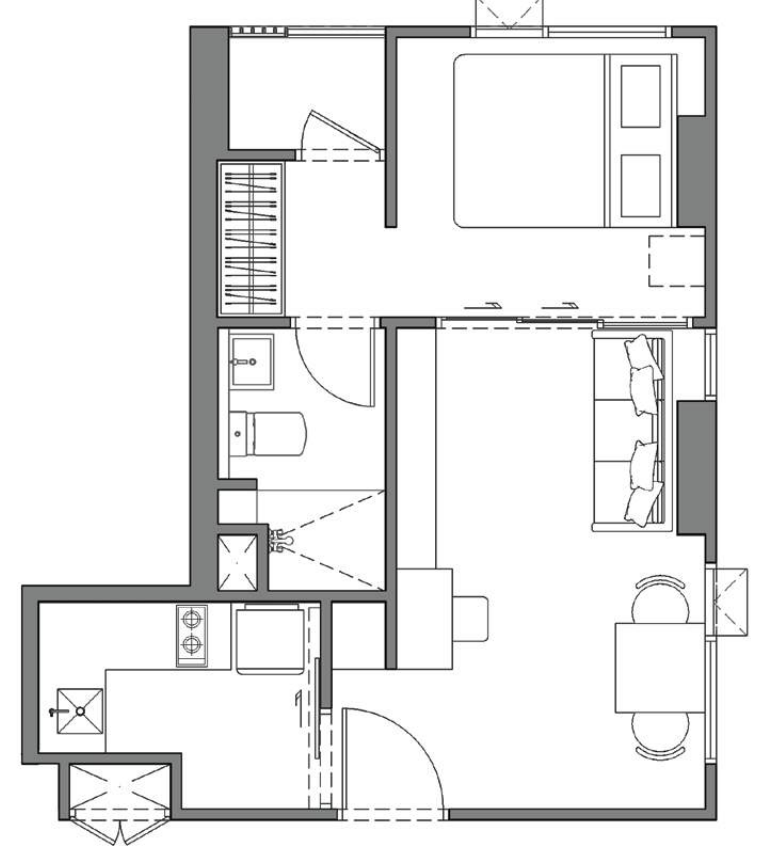
Type : C  
28.6 sq.m.



Type : D  
30.3 sq.m.



Type : E  
31.5 sq.m.

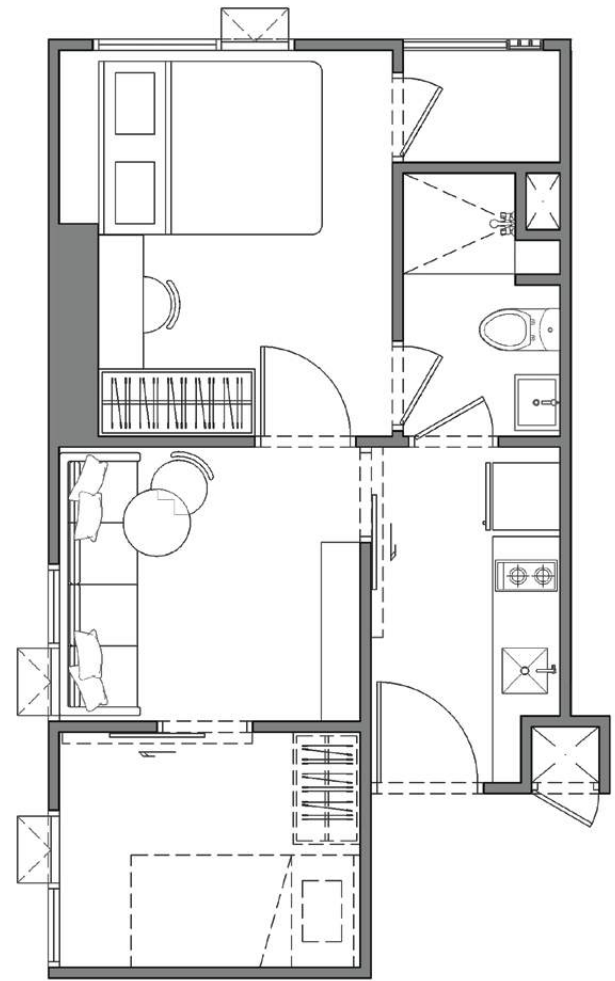


Type : F  
31.6 sq.m.

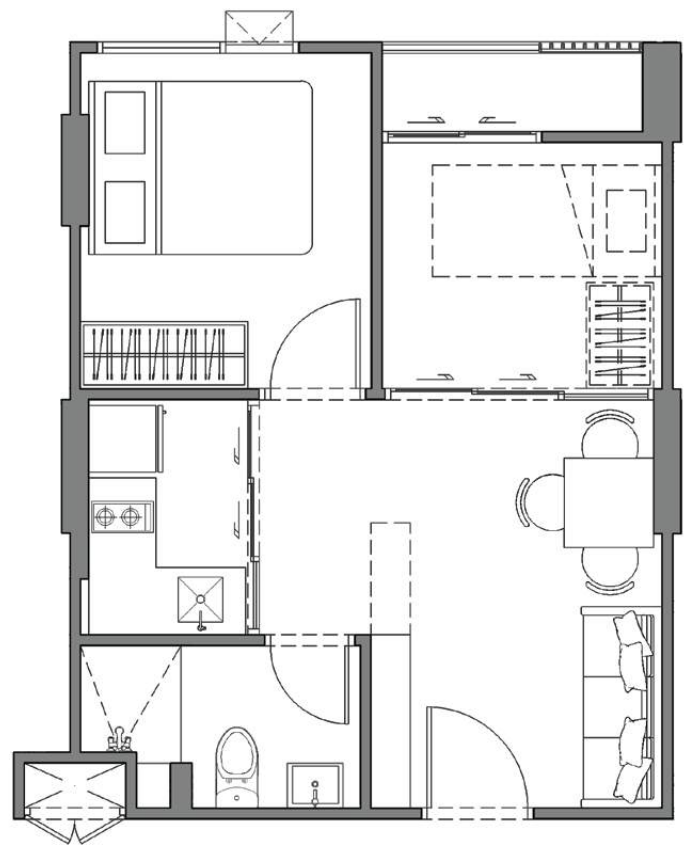


All illustration pictures are artist's impressions which serve only as a guideline for general conceptual idea of the project.

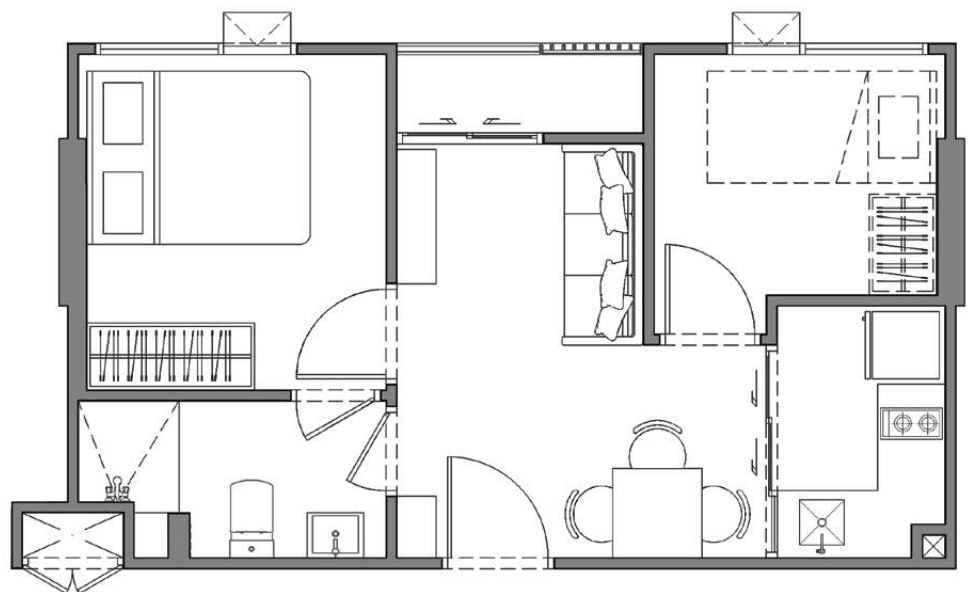
**UNIT TYPES**  
**1 BEDROOM PLUS**  
**2 BEDROOM**



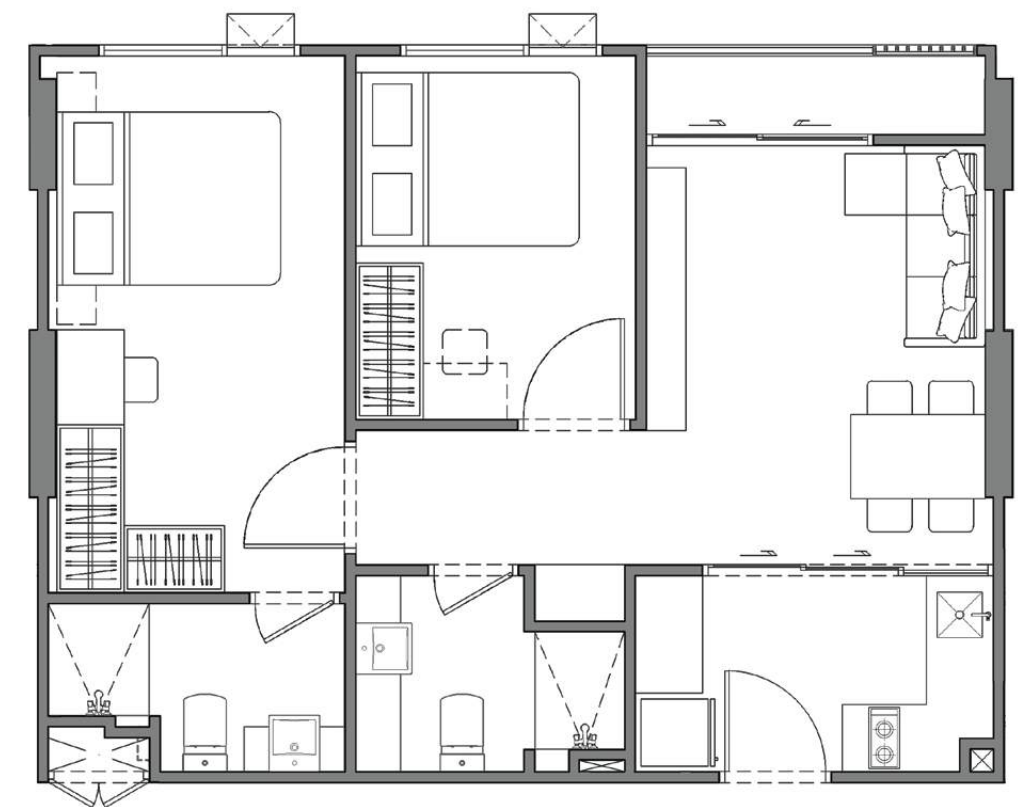
Type : G  
 1 Bedroom Plus  
 32.9 sq.m.



Type : H  
 1 Bedroom Plus  
 34.9 sq.m.



Type : I  
 1 Bedroom Plus  
 34.7 sq.m.



Type : J  
 2 Bedroom  
 53.6 sq.m.



## SUSTAINABLE DEVELOPMENT POLICY OF PRUKSA HOLDING PUBLIC COMPANY LIMITED

At PrukSA, we believe that a well-balanced life is the good combination between the quality of living environment and health caring, which can lead to true happiness. PrukSA Holding, therefore, aims to improve the well-being of our customers by developing the products and services to express the deep care at the holistic level; home and health. This is not only to help enhance Thai people' lives one step further, but also to grow business sustainably



Caring for quality of life and well-being by delivering quality residences.



Caring for the environment impact to help prevent the climate change.



Caring and providing good opportunities for the society to better the lives of the disadvantaged.



Care for good health of stakeholders.



# ENRICHING PEOPLE'S LIVES LIVE WELL STAY WELL

solutions to enrich healthy living experience, to make lives joyful and create a more sustainable community.



**TOTAL LIFESTYLES**  
Explore the wide-range of lifestyles in the facilities around the project



**COMMUNITY SPACE**  
Community design-based in common space, creating the sustainable living community



**WI-FI**  
free access for all resident, available in common area



**EV CHARGING**  
Charging docks for electric vehicles, available in parking area

## PRUKSA HOLDING ENHANCES YOUR LIFETIME LIVING



### HEALTH

**ViMUT Hospital** is a tertiary care hospital with 235 beds and 18 stories. It is designed in accordance with Joint Commission International (JCI) standards. The service is one stop service, including Health to Home service with the use of ViMUT application, private medical history check, check appointment and online doctor consultation (Tele medicine service).



**CLICKZY**

### SHOPPING

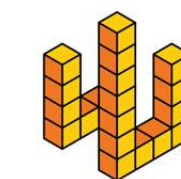
**Clickzy**, a platform to connect consumers and service providers together by creating one-stop service to make customers' life easier.



**MYHAUS**

### LIVING

**My Haus**, a smart home assistant that foster residential things focusing on making people living easier and comfortable living., whether IoT, Electronic Device, Developers & Property Management.



**WIZLAH TH**

### DECORATION

**Wizlah TH**, one stop service of lifestyle decoration marketplace, gather decorative products, designers and architects, and service in one place. As your assistant for interior design.



PRUKSA

CHAPTER ONE  
**more**  
KASET