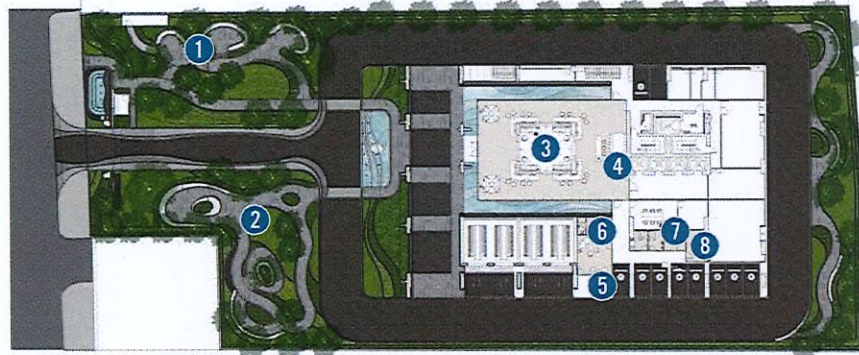


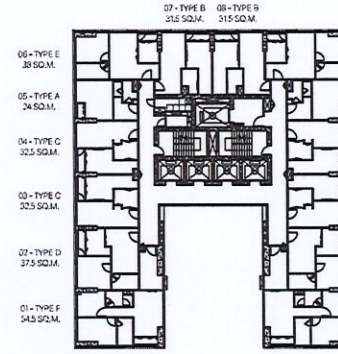
MASTER PLAN



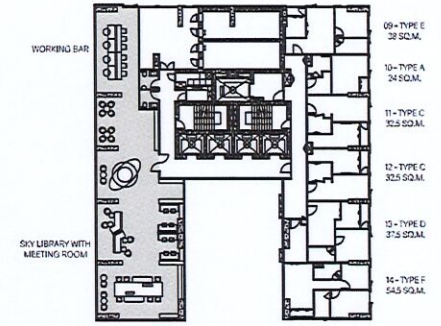
GROUND FLOOR

- 1. Leisure Green Area
- 2. Landscape Garden with Outdoor Active Area
- 3. Grand Lobby
- 4. Mall Floor
- 5. Car 'n' LRT Lobby
- 6. Driver Waiting Room
- 7. Vending Machine Room
- 8. Laundry

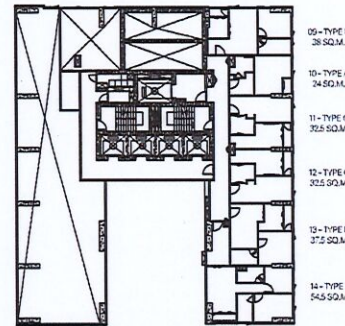
FLOOR PLAN



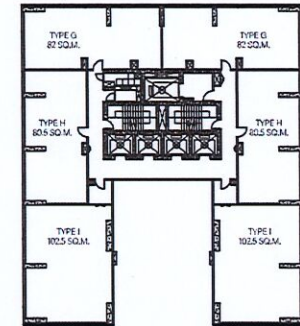
5TH, 28TH, 31ST-51ST FLOOR



29TH FLOOR

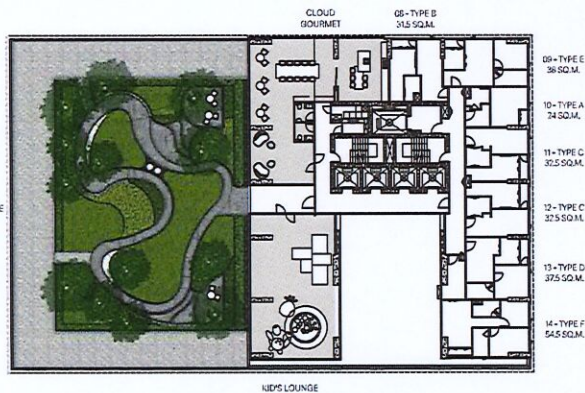


30TH FLOOR

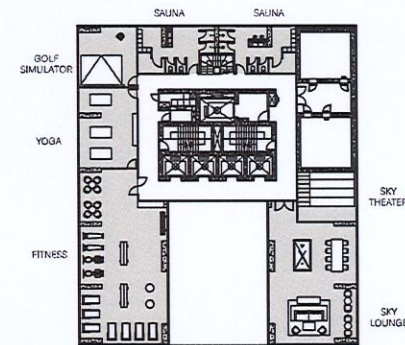


52ND-53RD FLOOR PENTHOUSE

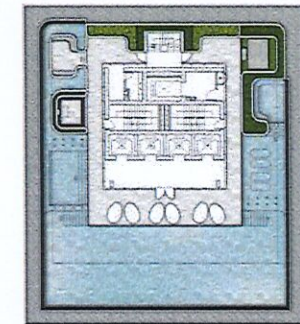
FLOOR PLAN



4TH FLOOR

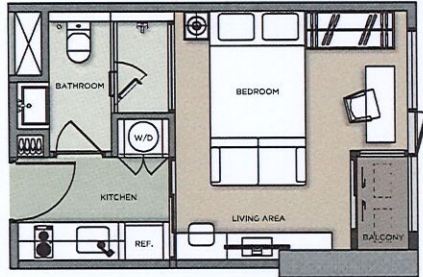


54TH FLOOR



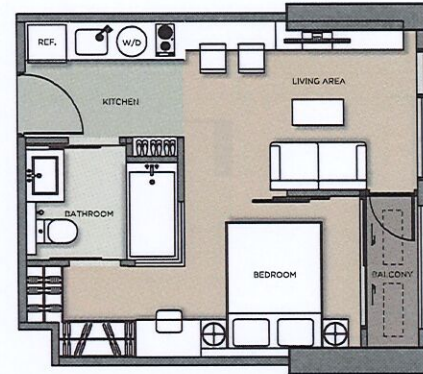
55TH FLOOR

UNIT TYPE



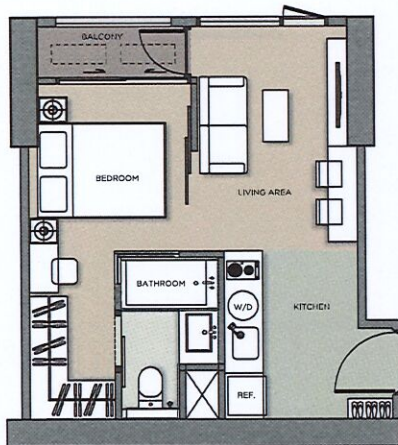
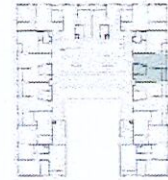
A : CLOUD STUDIO

24 SQM.



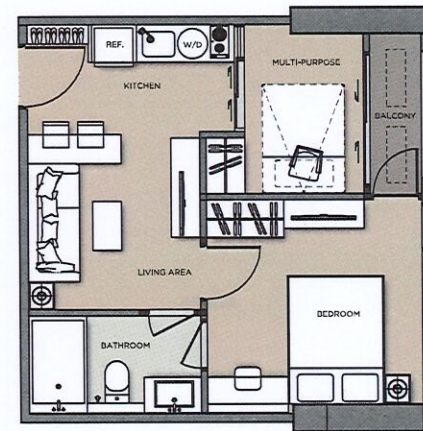
C : CLOUD SUITE

32.5 SQM.



B : CLOUD SUITE

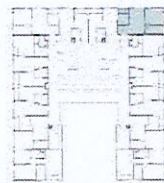
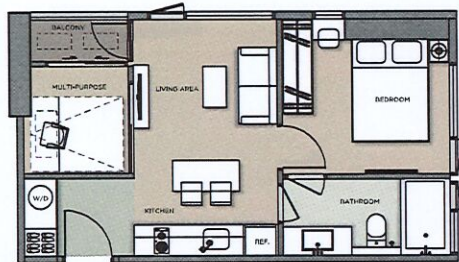
31.50 SQM.



D : CLOUD SUITE ELITE

37.5 SQM.

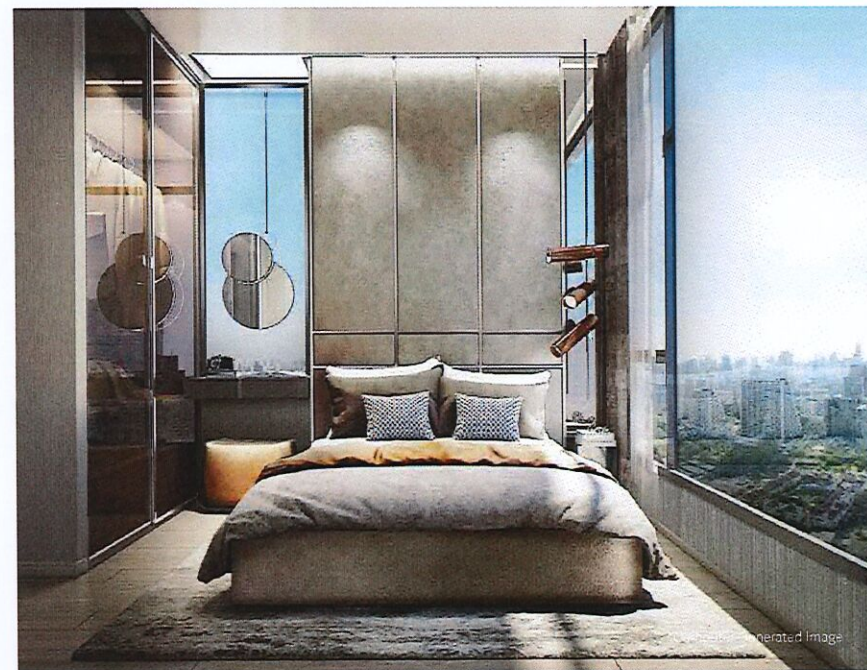


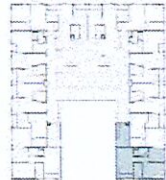
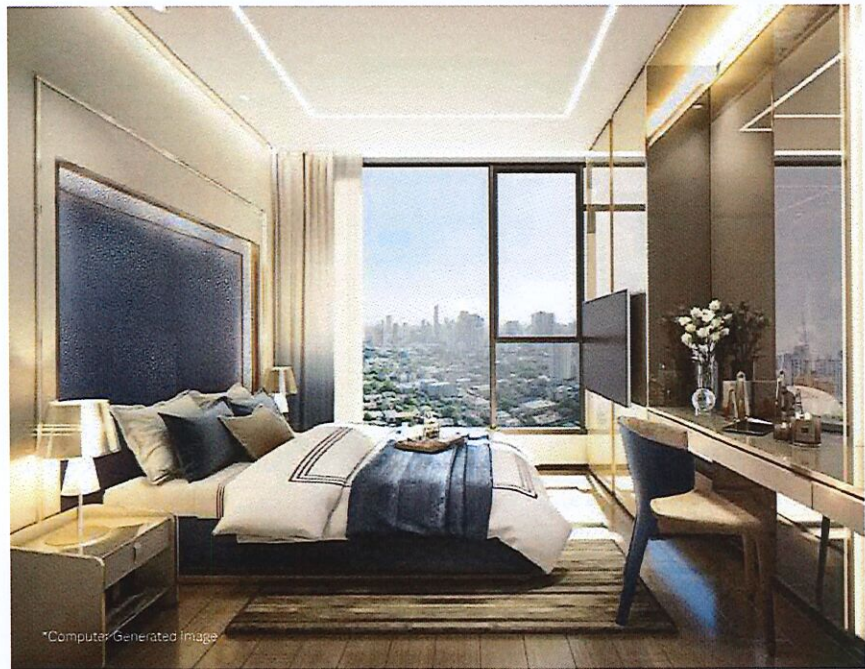


CLOUD SUITE ELITE 38 SQ.M.

CLOUD | THONGLOR · PHETCHABURI

CLOUD Suite Elite units have a separate living-dining area with an additional multi-purpose room ready to be converted to suit your lifestyle needs such as home office, walk-in closet, mini-theater or another bedroom. Space-adjustable, CLOUD Suite Elite units can comfortably accommodate a small family with ample built-in storage for your belongings. Fully fitted in the same calming color palette and modern contemporary style as the rest of the development, this mid-sized unit makes a great base in the city.





CLOUD DOUBLE EXCLUSIVE
54.5 SQ.M.

CLOUD Double Exclusive, 2 bathrooms family apartment has a large open plan kitchen area that opens up into a spacious living-dining room. The master bedroom is ensuite with a private bathroom and the guest bedroom shares a bathroom with the living-dining area. Bright and airy, this unit offers plenty of space and comfort for a growing family.