



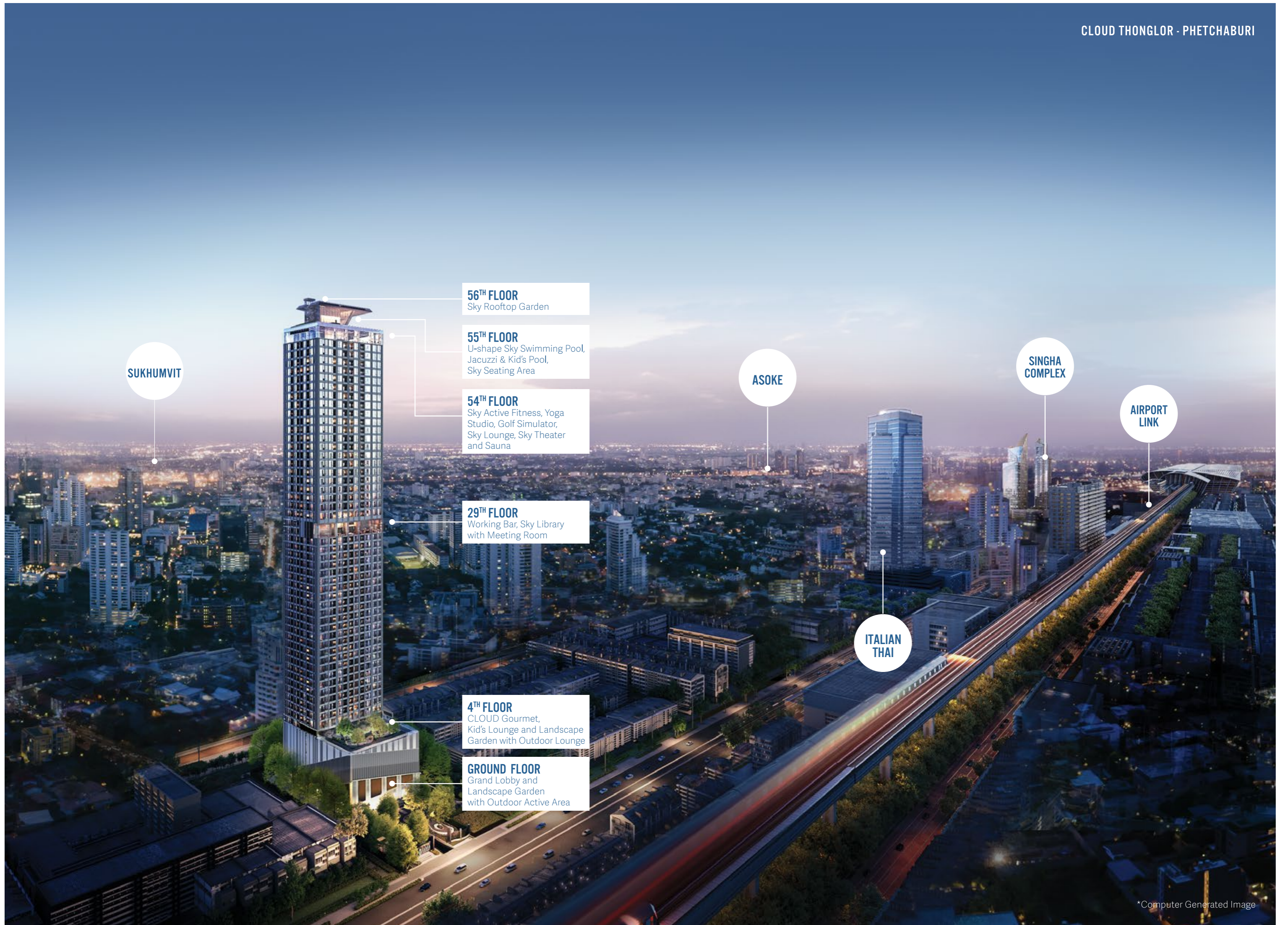
CLOUD

THONGLOR-PHETCHABURI

ILLUMINATE YOUR REAL SELF



*Computer Generated Image



SUKHUMVIT

56TH FLOOR
Sky Rooftop Garden

55TH FLOOR
U-shape Sky Swimming Pool,
Jacuzzi & Kid's Pool,
Sky Seating Area

54TH FLOOR
Sky Active Fitness, Yoga
Studio, Golf Simulator,
Sky Lounge, Sky Theater
and Sauna

29TH FLOOR
Working Bar, Sky Library
with Meeting Room

4TH FLOOR
CLOUD Gourmet,
Kid's Lounge and Landscape
Garden with Outdoor Lounge

GROUND FLOOR
Grand Lobby and
Landscape Garden
with Outdoor Active Area

ASOKE

SINGHA
COMPLEX

AIRPORT
LINK

ITALIAN
THAI

*Computer Generated Image

THE CLIMB IS TOUGH BUT THE VIEW FROM ABOVE IS WORTH IT.

Inspired by the revelation of a clear sky after rainfall, Cloud Thonglor-Phetchaburi by Risland rises serenely above all other developments on Phetchaburi road as the tallest luxury residential development project in Bangkok's newest emerging business and lifestyle district. Unseen possibilities unfold before you in a home reflective of your lofty achievements and ambition. Complete with facilities and services to engage or relax body and mind, illuminate your real self in a residence that captures your imagination and lives up to your highest expectations.



*Computer Generated Image



*Computer Generated Image

OWN AN IMPRESSIVE ARCHITECTURAL CENTERPIECE ON PHETCHABURI

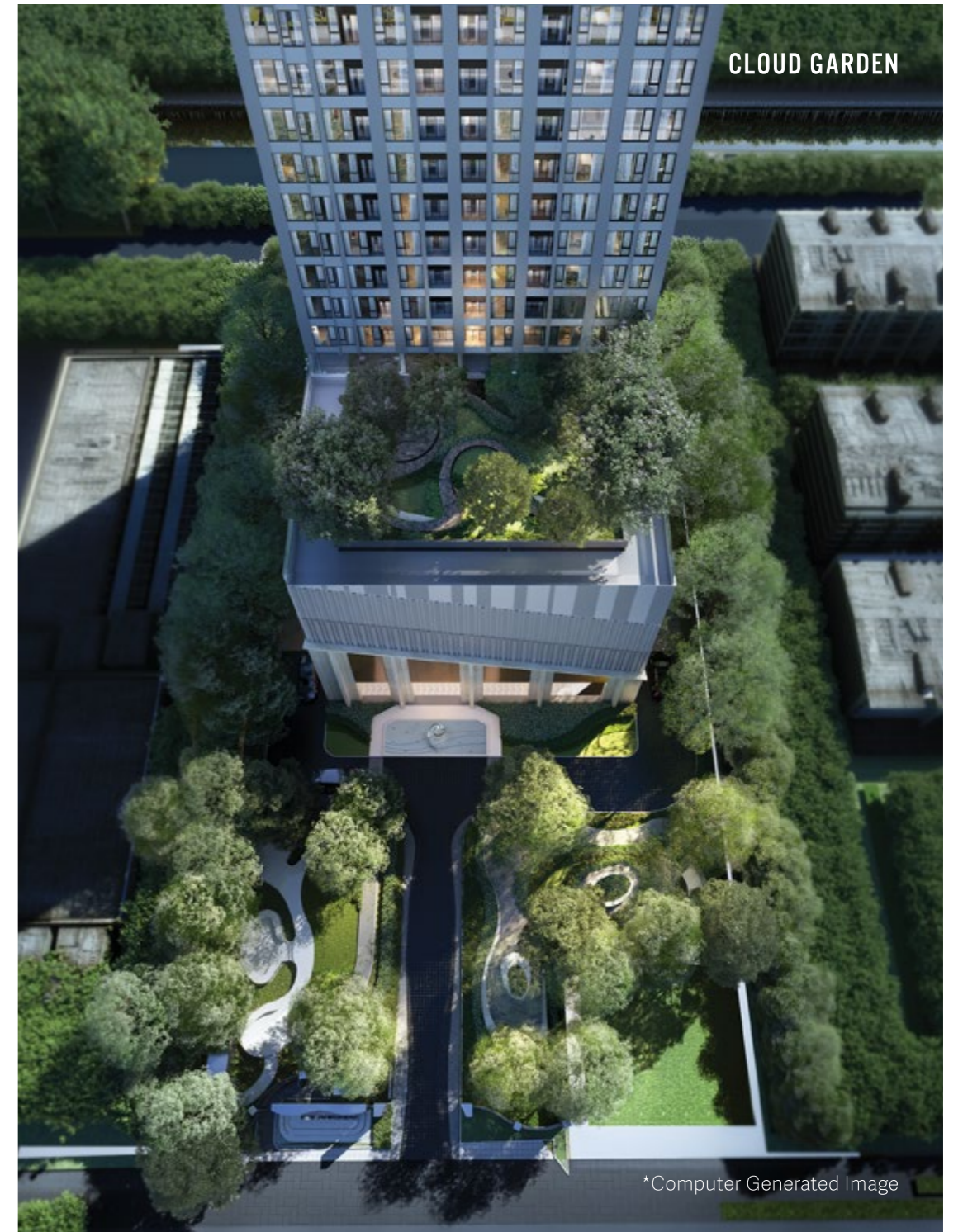
CLOUD | THONGLOR - PHETCHABURI

An elegant symphony of light and form, Cloud promises to be a shining architectural centerpiece on Phetchaburi that is both impressive and instantly recognizable. Inspired by colors found in the vast and limitless freedom of open skies, calming blues, soft white clouds, stately greys and silver raindrops give the glass and concrete exterior a bold Modern Contemporary aesthetic. Using only the finest quality materials and workmanship to create an aesthetically pleasing, yet functional layout, rooms and facilities are designed to fulfill the exacting expectations of modern contemporary life.

THE INFORMATION IN THIS BROCHURE COULD BE CHANGED AS MAY BE APPROVED BY THE AUTHORITIES OR DEVELOPER WITHOUT PRIOR NOTICE



*Computer Generated Image



*Computer Generated Image

A HAVEN OF PEACE AND TRANQUILITY IN THE HEART OF THE CITY

Upon entering Cloud, you will be greeted with a spacious and welcoming grand lobby area complete with reception space and reading lounge for receiving family and guests. This airy and elegant waiting area is finished in stately grey and white marble with hints of gleaming gold, reminiscent of cloudy skies with streaks of sunlight. Designed to create an atmosphere of peace and tranquility within an urban environment, landscaping has been carefully planned to include lots of mature trees, flowering shrubs and calming water features. Inclusion of numerous green leisure areas dispersed throughout this modern development such as 4th floor Cloud Garden and Rooftop Sky Garden creates a refreshing feeling of a living in a private haven, allowing residents to reconnect with nature.





*Computer Generated Image

ELEVATE YOUR WELLNESS

For maximum wellness and work-life balance, numerous leisure facilities are available to elevate your quality of life. Designed to add an element of balance and a streamlined transition between business and personal life, these dedicated facilities are located throughout the development, all offering floor-to-ceiling windows with phenomenal views of Petchaburi. This includes a splendid Sky Lounge on the 54th floor with games area as well as a Sky Theatre for private screenings and relaxing with friends and family.



*Computer Generated Image



SKY ACTIVE FITNESS

*Computer Generated Image



CLOUD GOURMET

*Computer Generated Image

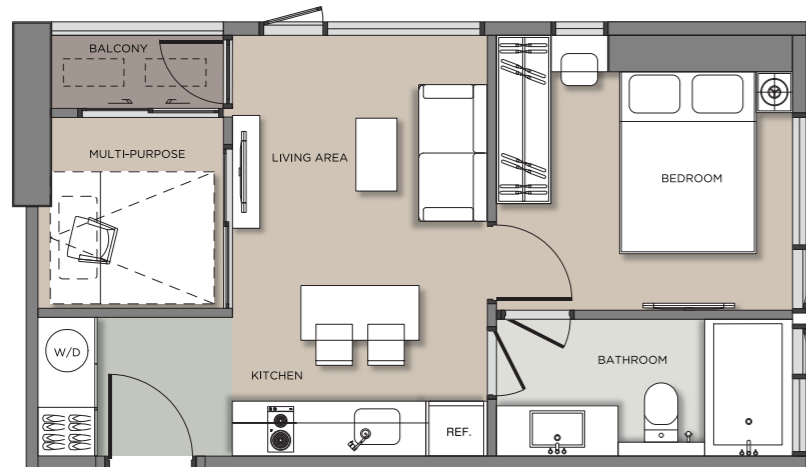


SKY WORKING BAR

*Computer Generated Image

EXPERIENCE DELUXE AND DYNAMIC URBAN LIVING

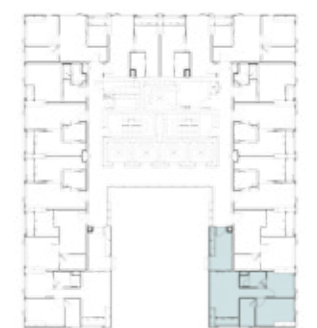
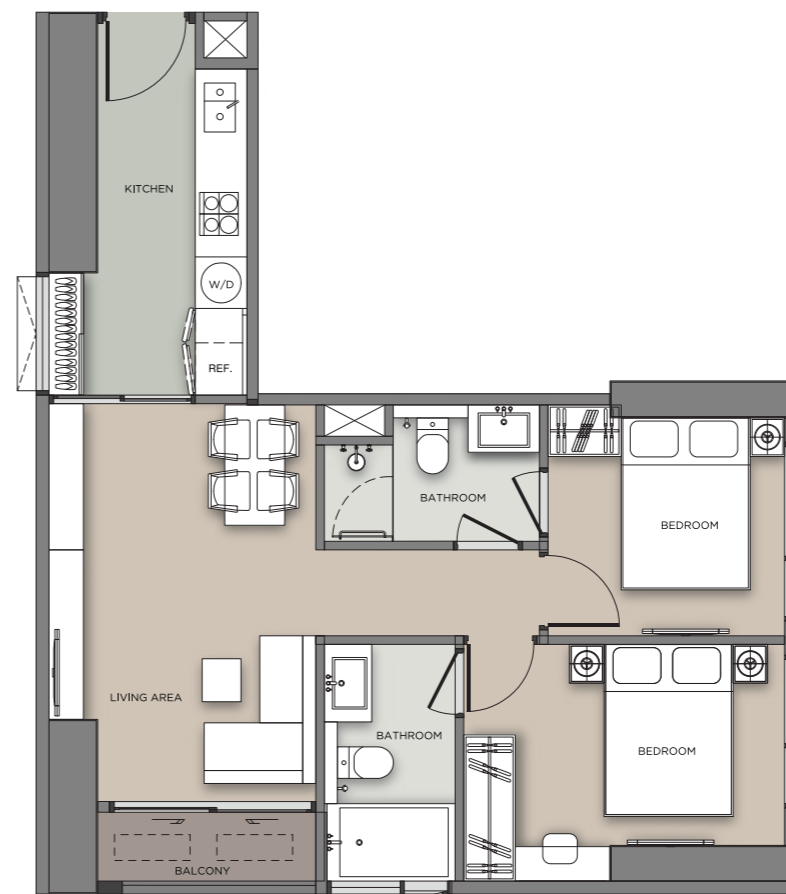
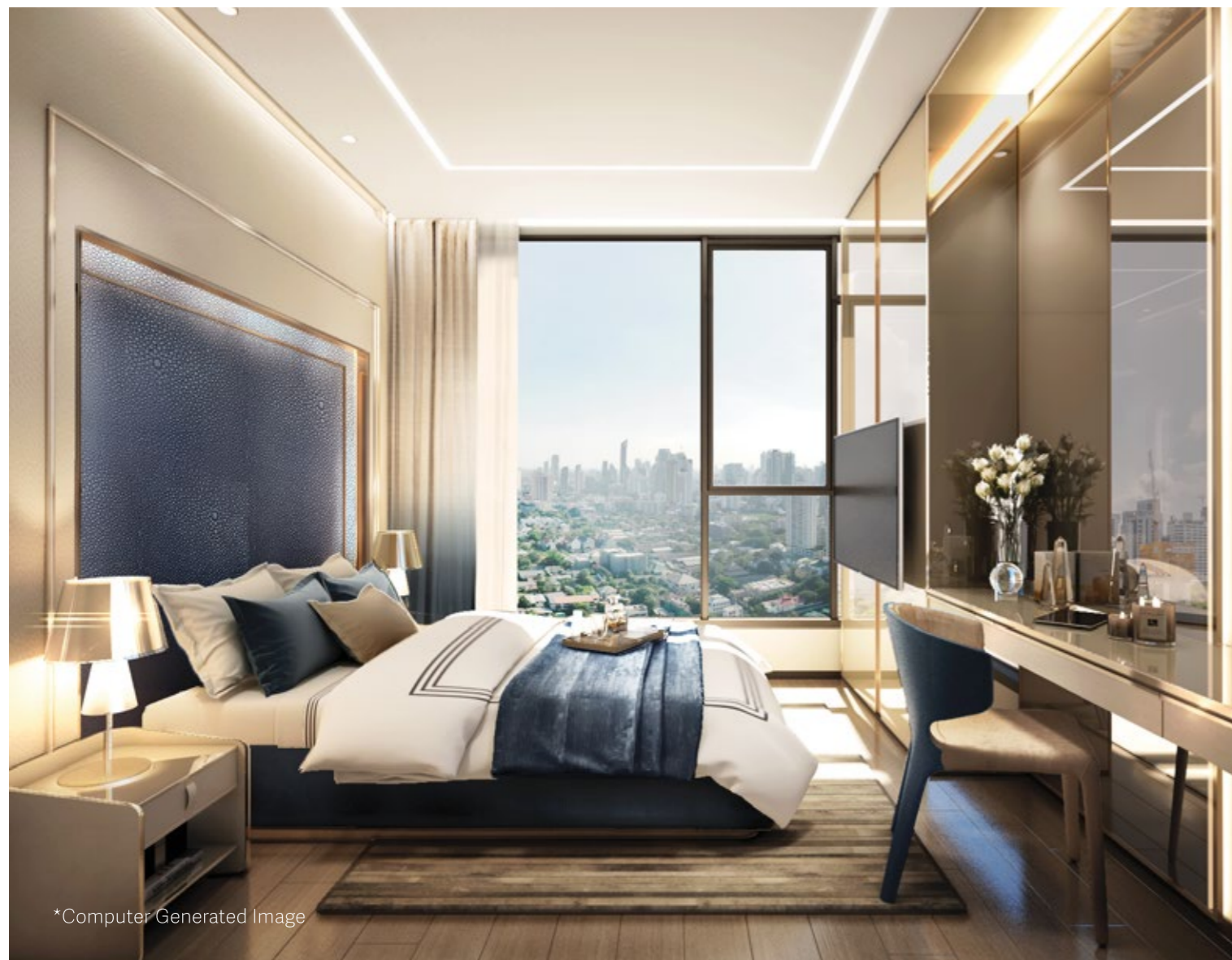
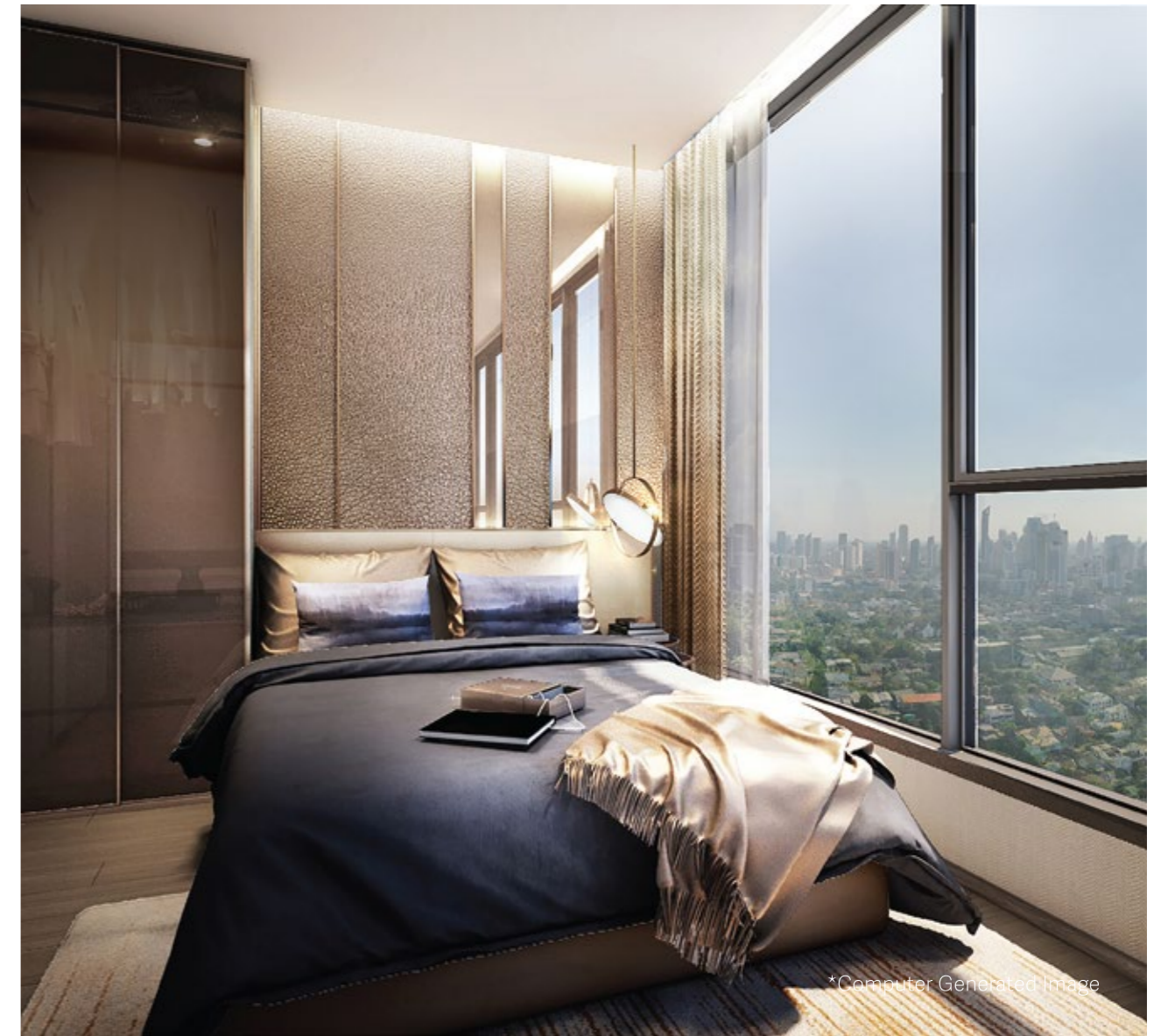
Cloud Thonglor-Phetchaburi presents a modern interpretation of deluxe and dynamic city living. On the 4th floor, the Sky Gourmet serves as your social-dining hub for entertainment, while the nearby a Kid's Lounge is perfect for younger residents. The Sky Working Bar (co-working space) and Sky Library with media-meeting room are located on the 29th floor. Enjoy stunning downtown views as you work out on the 54th floor at the spacious fully equipped fitness center. With dedicated boxing section, yoga studio and rhythm cycling, you don't have to go far to indulge in your favorite pastimes. A sauna room is available for relaxing in after a vigorous training session to release tension and restore calm.



CLOUD SUITE ELITE 38 SQ.M.

CLOUD Suite Elite units have a separate living-dining area with an additional multi-purpose room ready to be converted to suit your lifestyle needs such as home office, walk-in closet, mini-theater or another bedroom. Space-adjustable, CLOUD Suite Elite units can comfortably accommodate a small family with ample built-in storage for your belongings. Fully fitted in the same calming color palette and modern contemporary style as the rest of the development, this mid-sized unit makes a great base in the city.

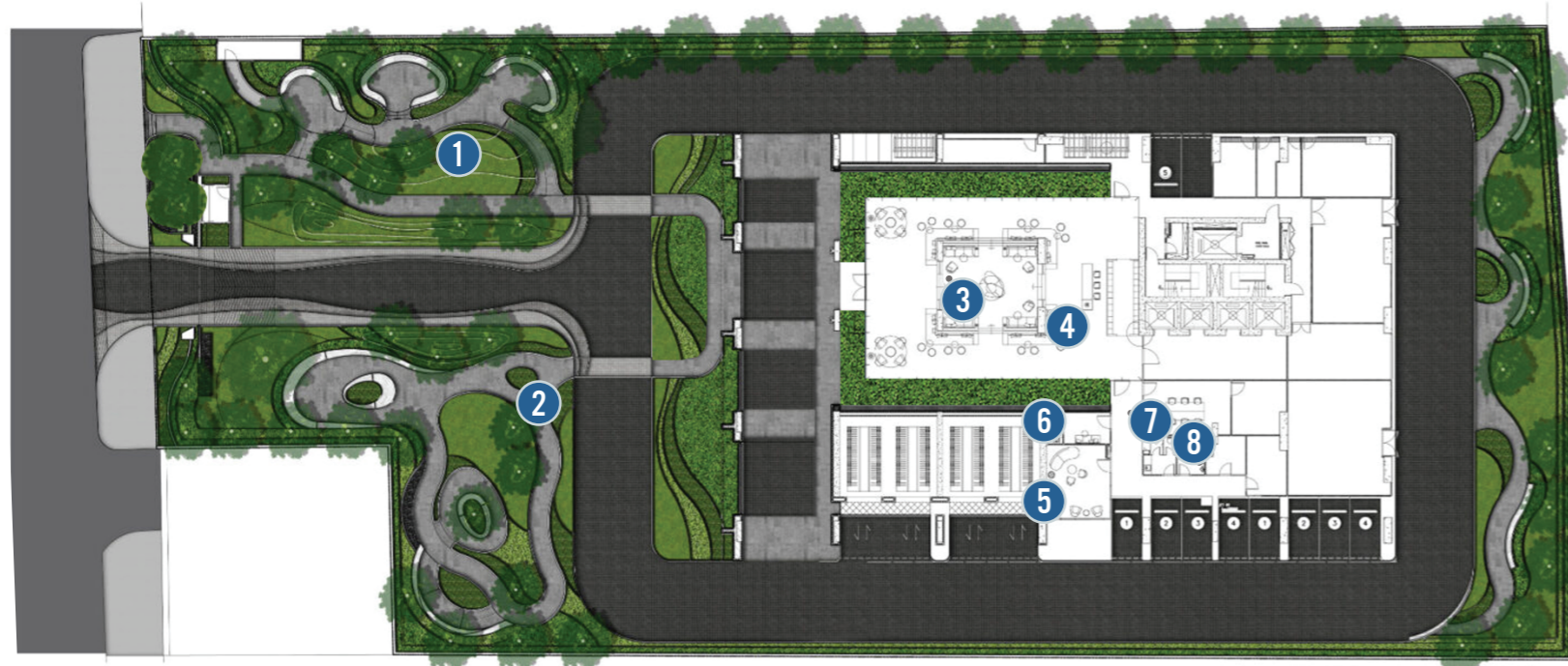




CLOUD DOUBLE EXCLUSIVE 54.5 SQ.M.

CLOUD Double Exclusive, 2 bathrooms family apartment has a large open plan kitchen area that opens up into a spacious living-dining room. The master bedroom is ensuite with a private bathroom and the guest bedroom shares a bathroom with the living-dining area. Bright and airy, this unit offers plenty of space and comfort for a growing family.

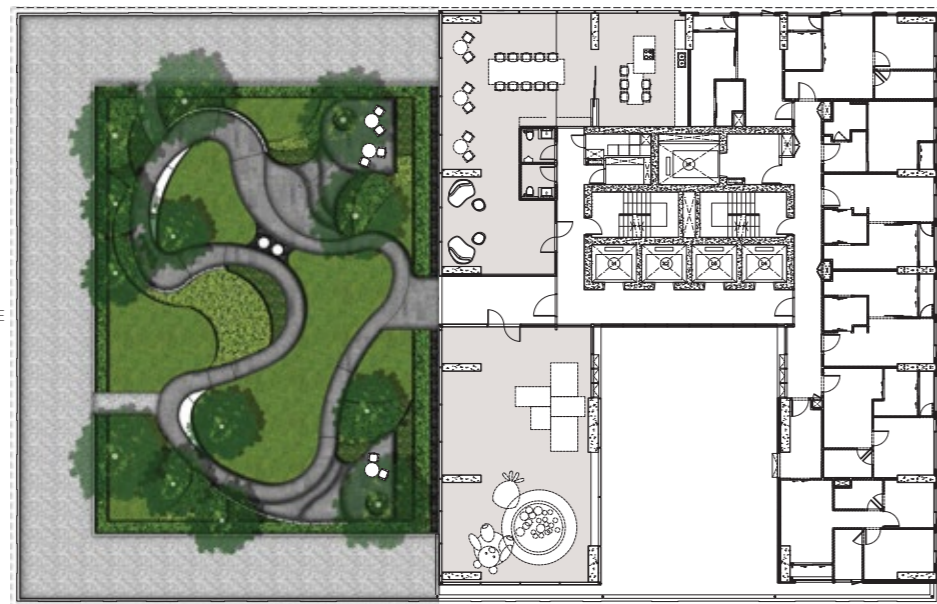
MASTER PLAN



GROUND FLOOR

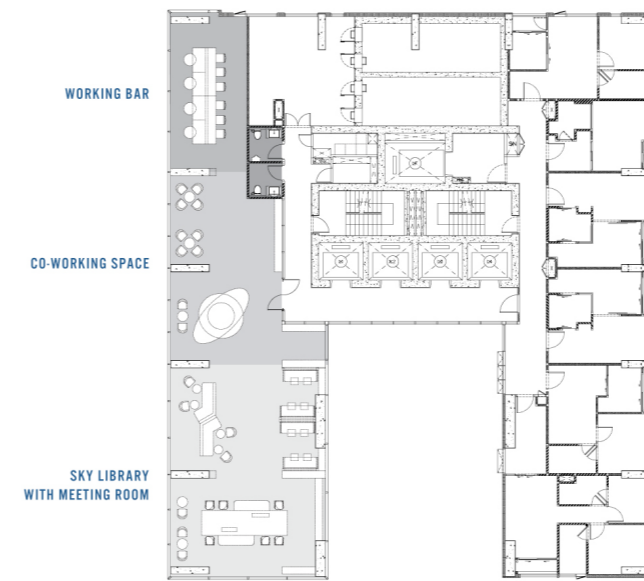
1. Leisure Green Area
2. Landscape Garden with Outdoor Active Area
3. Grand Lobby
4. Mail Room
5. Carpark Lift Lobby
6. Driver Waiting Room
7. Vending Machine Room
8. Laundry

FLOOR PLAN

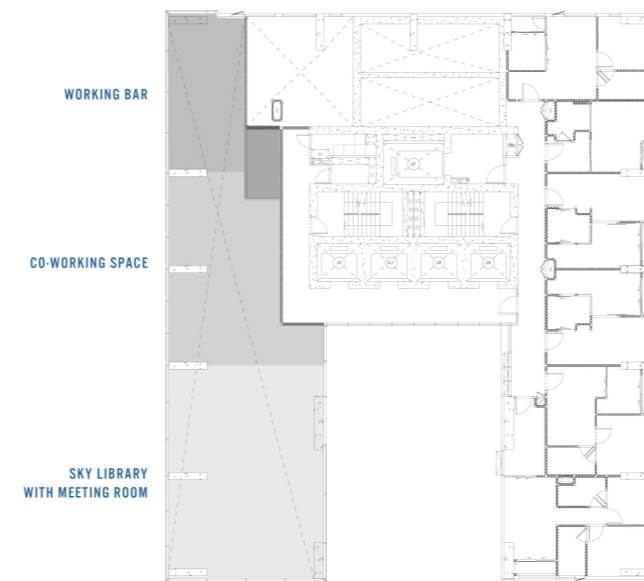


4TH FLOOR

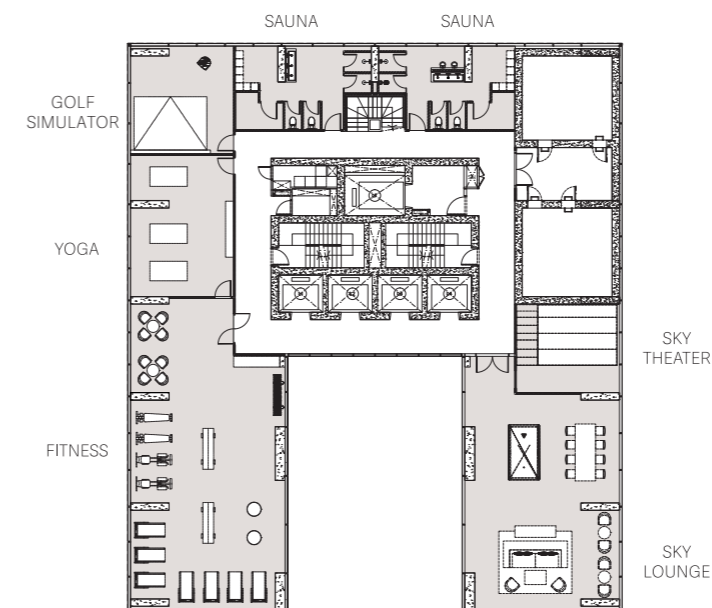
FLOOR PLAN



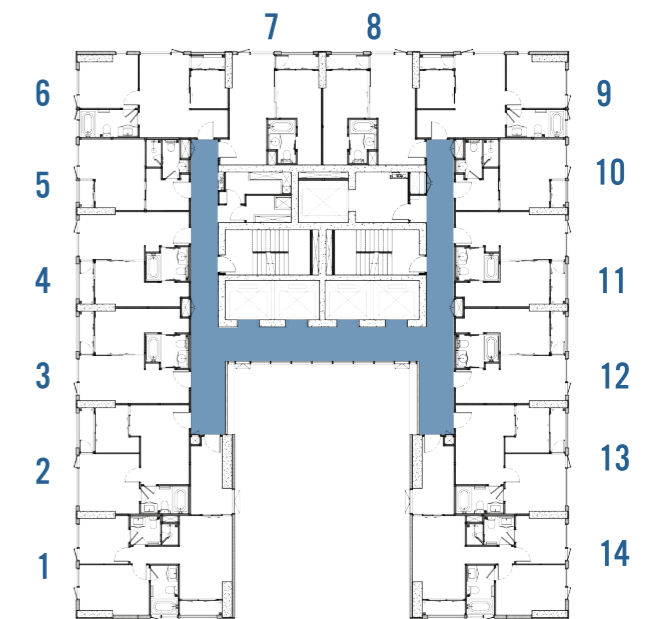
29TH FLOOR



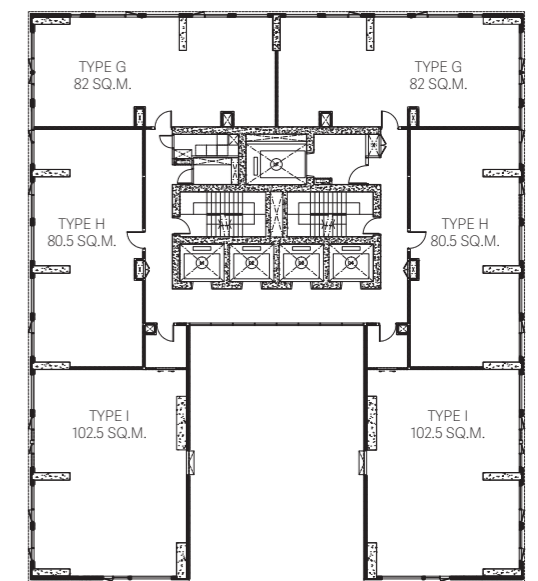
30TH FLOOR



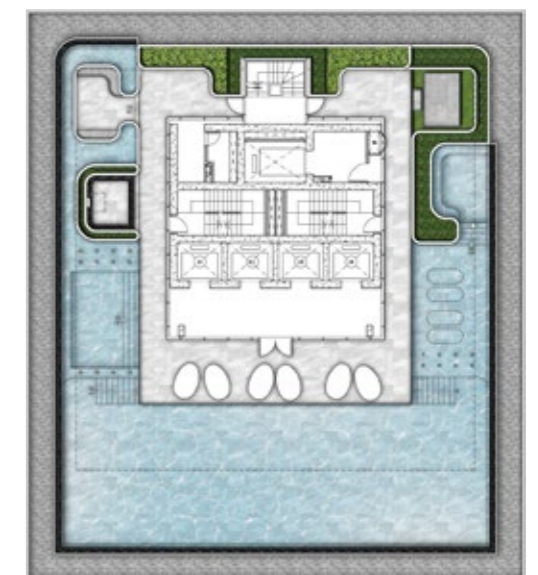
54TH FLOOR



5TH-18TH, 31ST - 40TH FLOOR

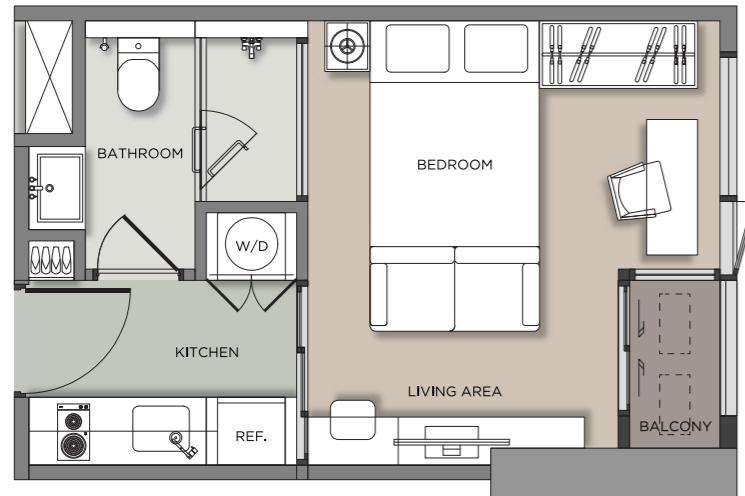


52ND - 53RD FLOOR PENTHOUSE



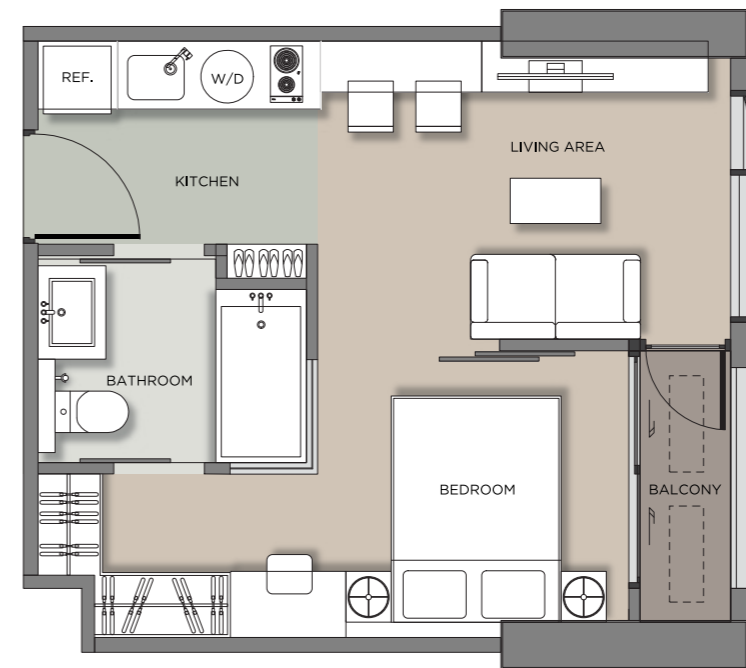
55TH FLOOR

UNIT TYPE



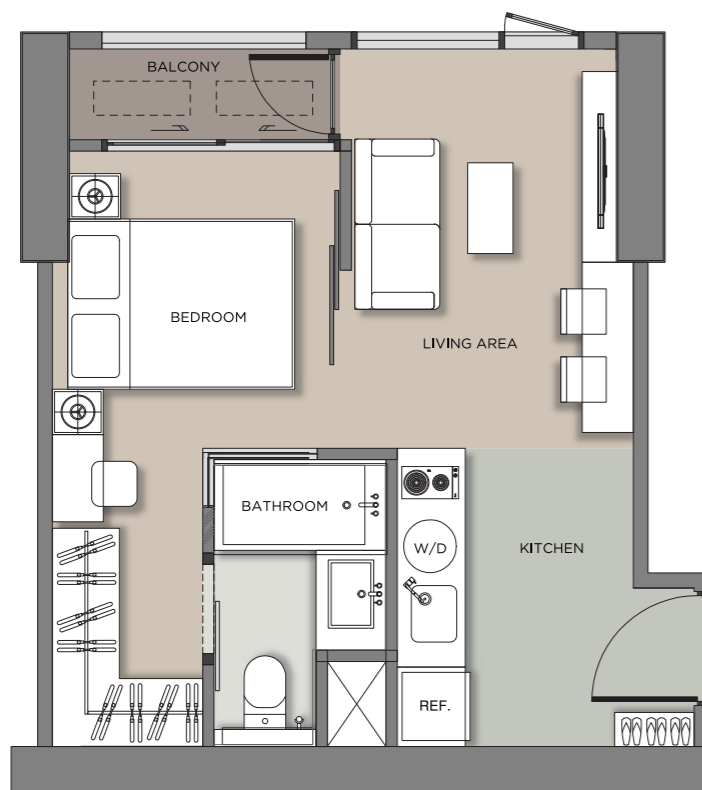
A : CLOUD STUDIO

24 SQM.



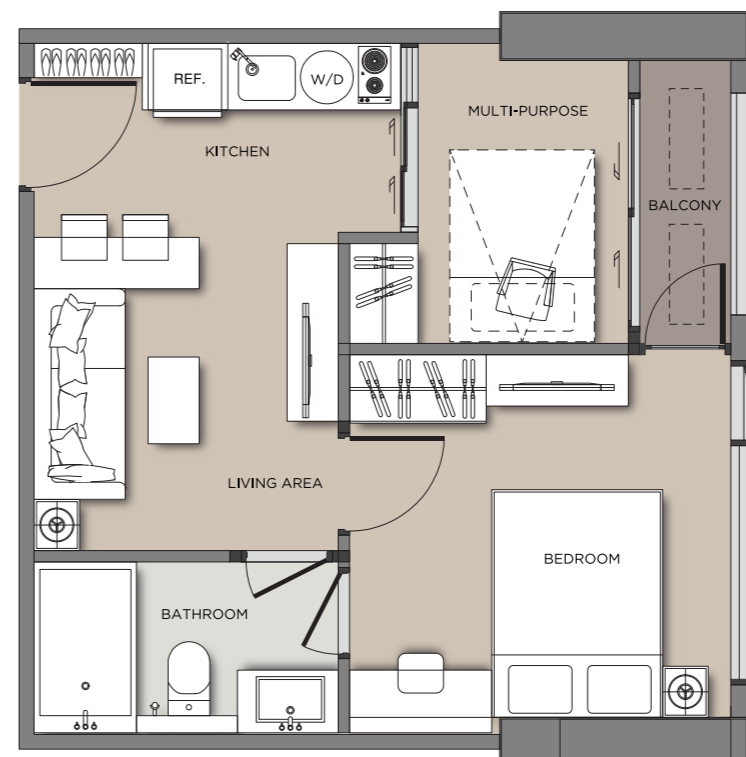
C : CLOUD SUITE

32.5 SQM.



B : CLOUD SUITE

31.50 SQM.



D : CLOUD SUITE ELITE

37.5 SQM.

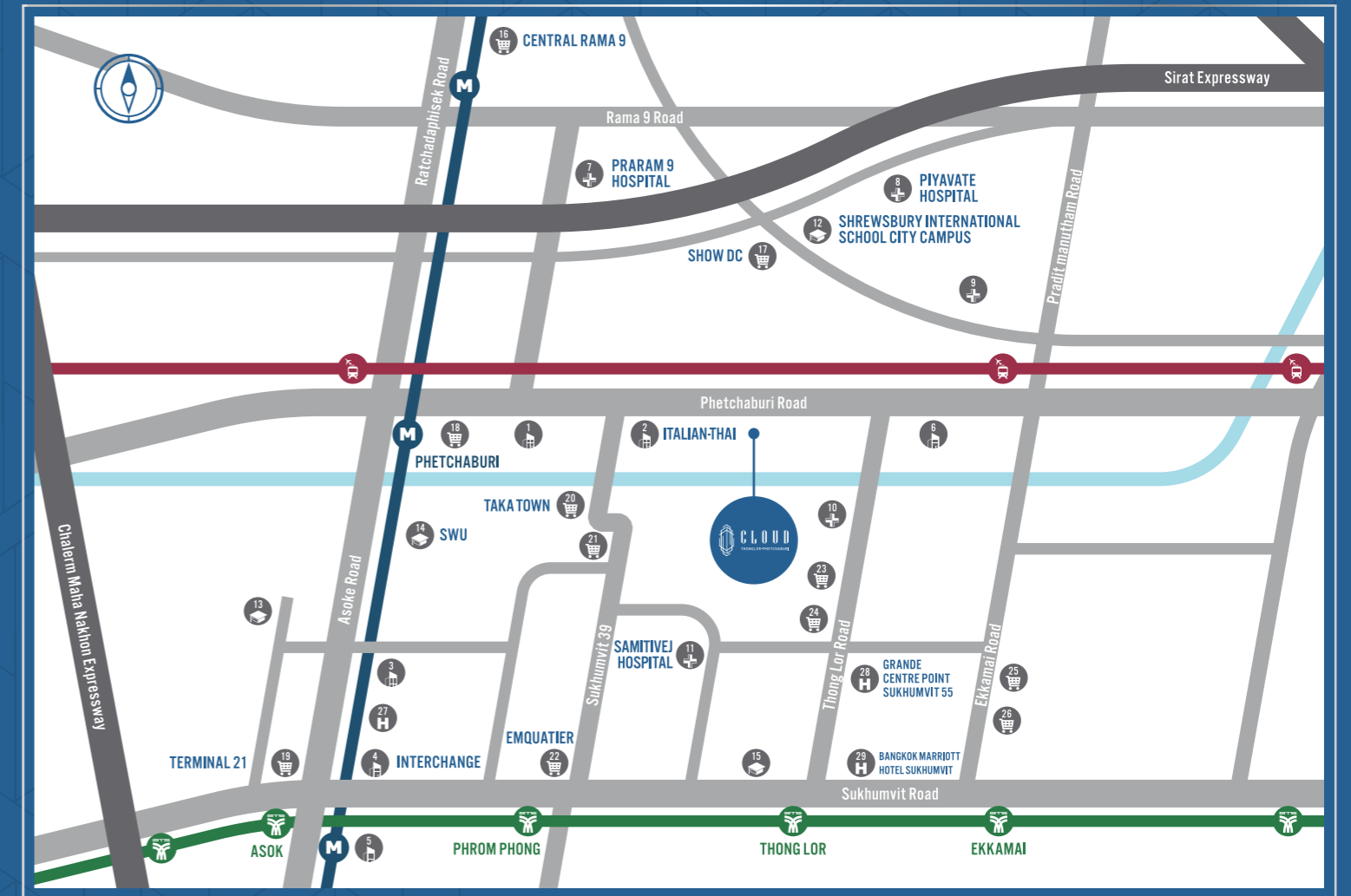
PROJECT DETAIL

Development Name : CLOUD Thonglor-Phetchaburi
 Developer : PBR 49 Co.,Ltd., an affiliated company of Risland (Thailand) Co.,Ltd.
 Location : Phetchaburi Road, Huai Khwang, Bangkok
 Total Land Area : 3-0-60 Rai (Approximately 5,040 sq.m.)
 Building / Units : 1 Building, 55-Storey / 591 units
 Parking : 333 Lots
 Type of Units : CLOUD Studio (24 sq.m.)
 CLOUD Suite (1) (31.5-32.5 sq.m.)
 CLOUD Suite Elite (1 Plus) (37.5-38 sq.m.)
 CLOUD Double Exclusive (2) (54.5 sq.m.)
 CLOUD Penthouse (529.38 sq.m.)

Facilities : Ground
 : 4th
 : 29th
 : 54th
 : 55th
 : Sky Rooftop Garden

- Lobby, Reception Landscape Garden with Outdoor Active Area
- CLOUD Gourmet, Kid's Lounge, Landscape Garden
- Sky Library, Working Bar
- Sky Fitness, Sky Golf Simulator, Sky Yoga, Sky Lounge, Sky Theater, Sauna and Locker Room
- Semi-outdoor U-shape Sky Swimming Pool
- Sun Deck, Jacuzzi & Kid's Pool, Sky Seating Area

The details of specification and fact sheet are subject to further changes and/or amendments with prior notice.



LOCATION MAP

- OFFICE BUILDING
- HOSPITAL
- SCHOOL
- SHOPPING
- HOTEL
- BTS
- MRT
- ARL (AIRPORT RAIL LINK)

OFFICE BUILDING

1. Thai Summit
2. Italian-Thai
3. Sino-thai
4. Interchange
5. Exchange
6. Charn Issara 2

HOSPITAL

7. Praram 9 Hospital
8. Piyavate Hospital
9. Bangkok Hospital
10. Camillian Hospital
11. Samitivej Hospital

SCHOOL

12. Shrewsbury International School City Campus
13. Wattana Wittaya Academy
14. Srinakharinwirot University
15. Bangkok Prep School

SHOPPING

16. Central Rama 9
17. Show DC
18. Singha Complex
19. Terminal 21
20. Taka Town
21. UFM Fuji Supermarket
22. EmQuartier
23. The Commons
24. J Avenue
25. Health Land
26. Big C

HOTEL

27. Pullman Bangkok Grande Sukhumvit
28. Grande Centre Point Sukhumvit 55
29. Bangkok Marriott Hotel Sukhumvit 55